
Safety instructions for visitors



Siempelkamp

Emergency behavior

– Keep calm –

In case of a fire or an accident, please call the emergency number on the internal telephones or the cell phone.

Dial: Emergency call 347 or cell phone +49 2151 - 894 347



Emergency call: 347

- › Who is reporting?
- › What happened?
- › Where did it happen?
- › How many people are injured?
- › What injuries?
- › Wait for any further questions!

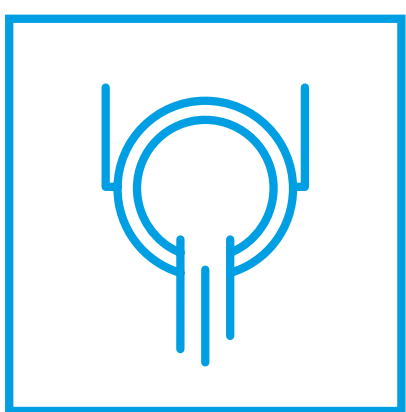
Most important instructions



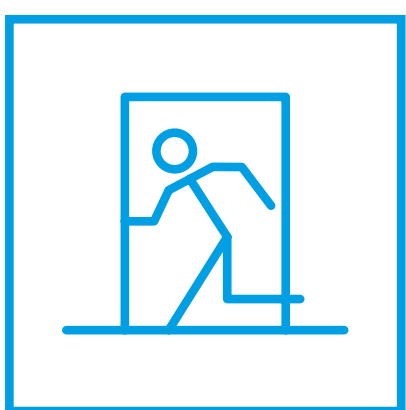
In any case, please follow the instructions of your contact person.



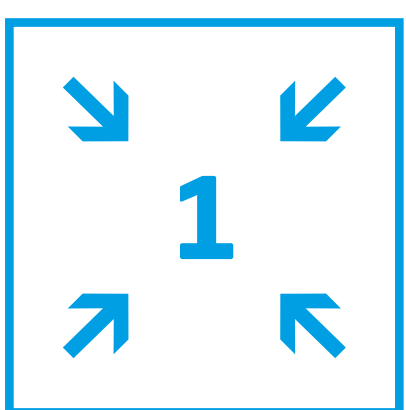
Watch out for industrial trucks and casting ladles and use the marked walkways.



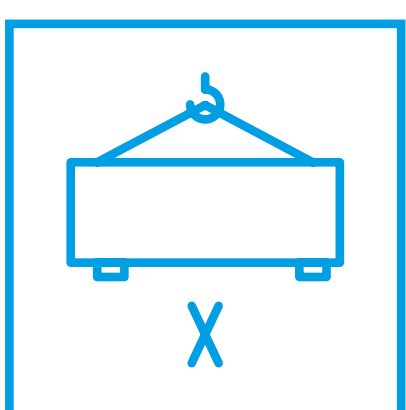
Observe the melting processes and maintain the safety distance to the molten iron.



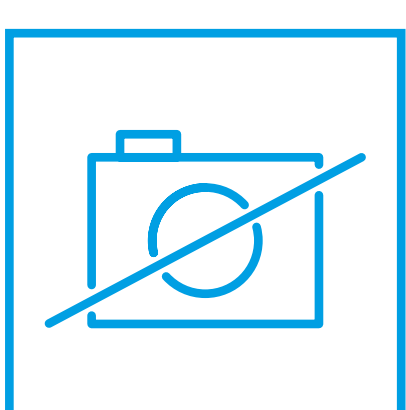
Escape routes are marked appropriately.



Sollte der von Ihnen besuchte Betriebsbereich evakuiert werden müssen, begeben Sie sich bitte zu dem Ihnen zugewiesenen Rettungspunkt. Die Durchsage erfolgt mittels Lautsprecher.



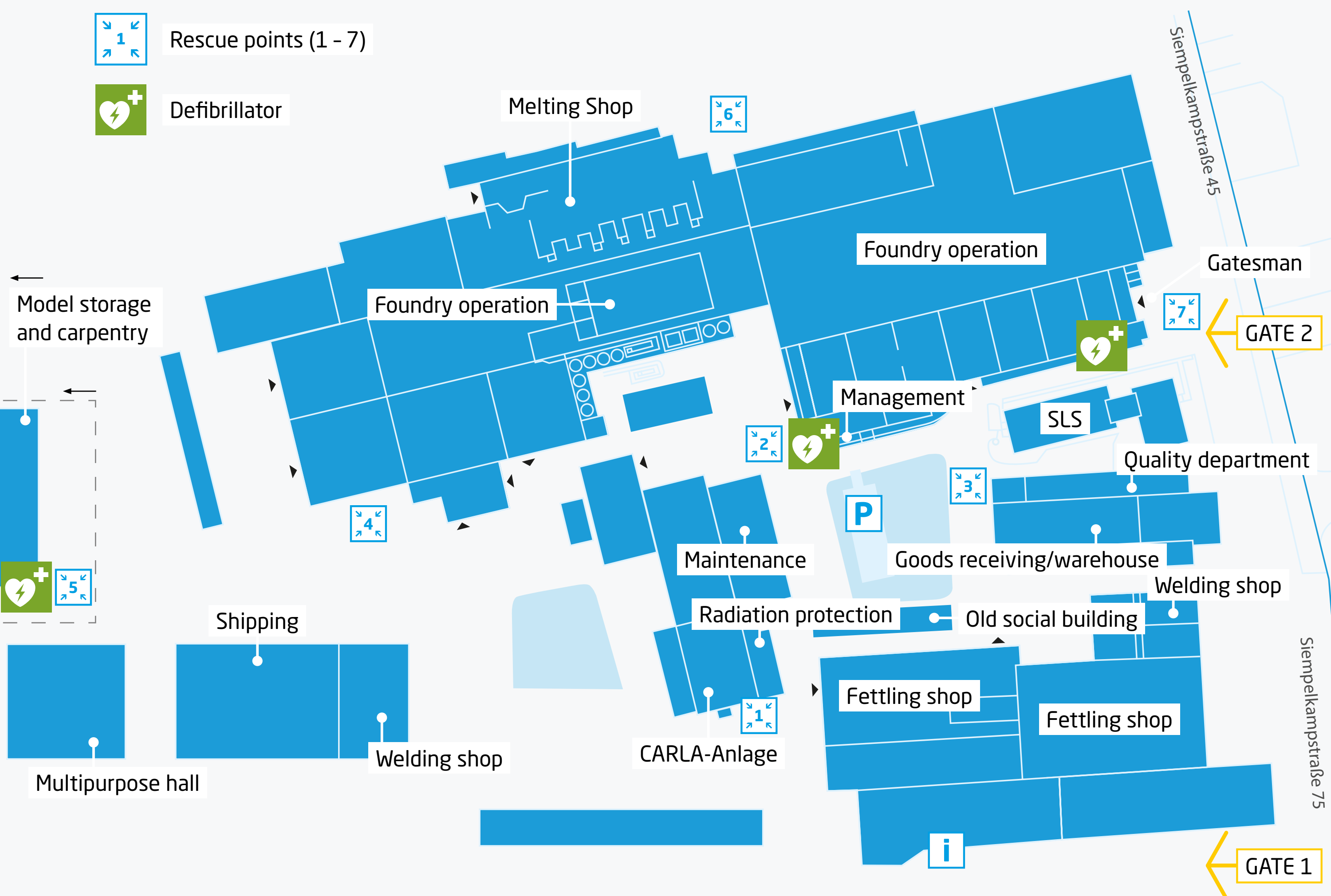
Do not walk under suspended loads.



Filming and photography on the premises is prohibited.



Should you have injured yourself, please inform your contact person immediately. He/she will arrange for you to be cared for by our company first aiders.

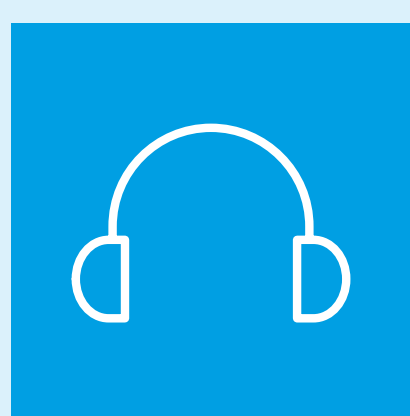


Wear suitable footwear for a tour of the production area.

Use the protective equipment provided:



Safety helmet



Hearing protection

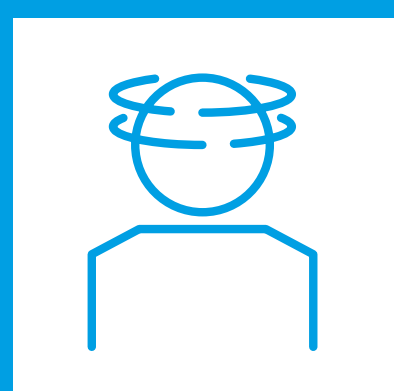


Safety goggles



Safety vest

Protected equipment may vary depending on the area visited.



Visitors who are impaired by alcohol, drugs or other narcotics are not allowed to enter the premises.



Pay attention to the signage.



Do not leave the group or stay behind.



Highest safety in all cases

Observe all prohibition and mandatory signs
in the interest of your own safety!

Siempelkamp - German Engineering at high-tech level

Innovative by tradition - three divisions, one group: Based in Krefeld for more than 135 years, Siempelkamp is an international technology supplier with its three divisions machine and plant engineering, foundry technology and service.

About Siempelkamp

Siempelkamp is a global active technology supplier with a focus on three main divisions: machine and plant engineering, foundry technology, and engineering and services. Siempelkamp machine and plant engineering is a systems supplier of press lines and complete plants for the wood-based panel industry, the metal forming industry as well as the composite and rubber industry. The Siempelkamp foundry is one of the world's largest hand-molding foundry producing castings with a weight of up to 320 t (353 US tons). Siempelkamp engineering and service is a specialist for dismantling nuclear facilities and a supplier of transport and storage vessels for nuclear waste. The construction of complete wood-based panel plants is one of our core competencies. The needs and challenges in the various production processes of our customers already play an enormous role in the development of our wood-based panel plants: Siempelkamp develops an individual plant concept for each customer in order to guarantee all prerequisites for a trouble-free, safe and economical production process in the wood-based panel sector.

Siempelkamp Giesserei GmbH
Siempelkamp Metallurgie GmbH
Siempelkamp Logistics & Service GmbH
Siempelkampstraße 45
47803 Krefeld

Kontakt Arbeitssicherheit:
Tel.: +49 2151 - 92 4444
Fax: +49 2151 - 92 5961
stabstelle.uws-asi@siempelkamp.com

Intelligent engineering
for future generations.